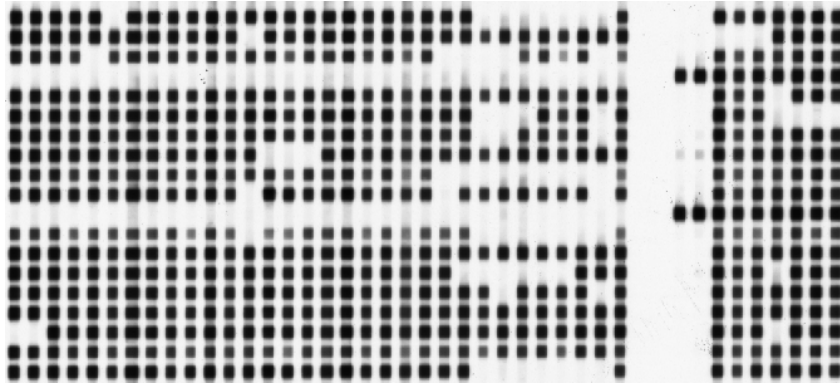


Analysis of the DR

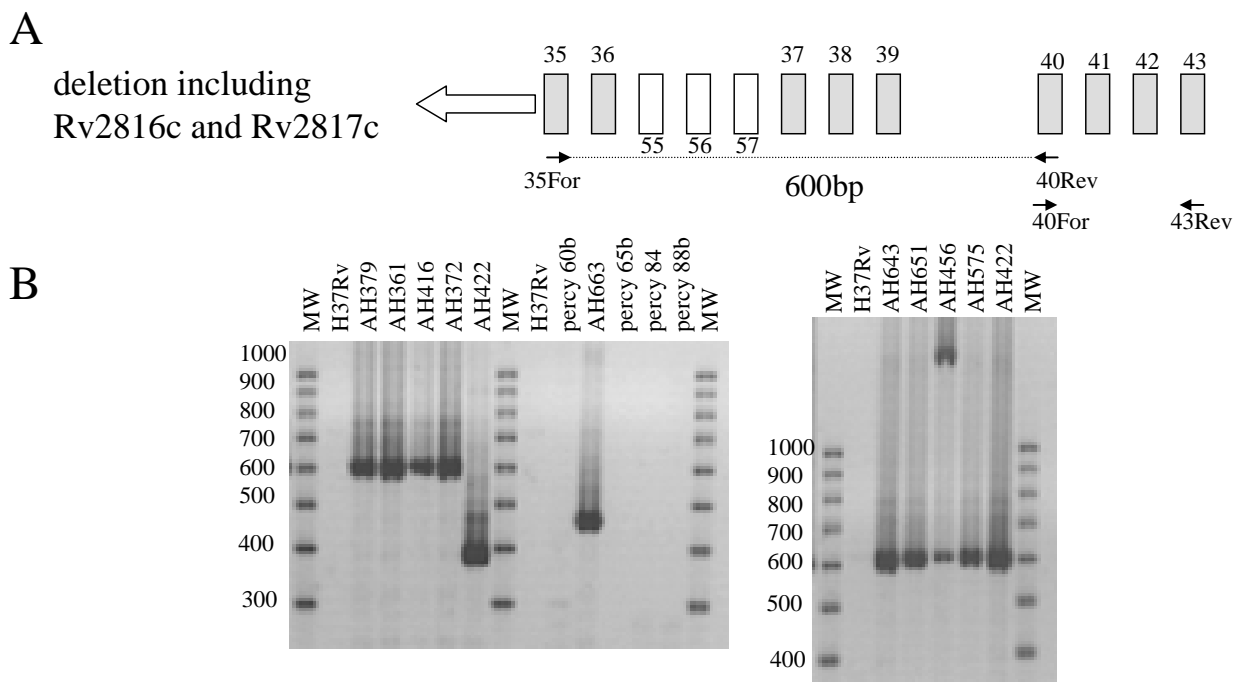
Spoligotyping

The DR is analysed by spoligotyping for the presence/absence of 43 spacers



PCR-based analysis

A more detailed analysis of the DR can be performed by PCR and sequencing in particular for Beijing-type isolates.



Deletions of spacers 55, 56 and 57 or insertion of IS can be observed upon sequencing of PCR products with abnormal sizes.